



Reducteur de pas M et PG en polyamide

Polyamide M and PG thread reducers


REVISION: **02**Fam.: **REA**Page **1/1**

DECRIIL SERIL ZI de la tuilliere 01700 MIRIBEL FRANCE · Tel: +33 (0)4 72 25 83 17·


DESCRIPTION	DESCRIPTION
Reducteur polyamide de pas sans halogene, phosphore et cadmium contour exagonal plat Couleur gris RAL 7035	Thread reducers made of high quality polyamide PA6 Free of halogens, phosphorus and cadmium Hexagonal planes RAL 7035 grey colour

CARACTERISTIQUE DIMENSION / DIMENSIONAL CHARACTERISTICS

a) Pas metrique / Metric Thread (EN60423)

Reference / Reference	Pas / Thread C/B	A	D		LR	Poids / Weight g	sachets / Packing u.
471612	M 16/12	12	27	20	8	2.9	50
472012	M 20/12	12	27	24	8	3.8	100
472016	M 20/16	12	27	24	9	2.6	50
472516	M 25/16	14	35	29	8	9.2	100
472520	M 25/20	13	36	30	10	7.0	50
473220	M 32/20	16	40	36	10	12.5	50
473225	M 32/25	15	40	36	11	10.3	25
474025	M 40/25	16	51	46	10	22.0	50
474032	M 40/32	16	48	44	12	10.4	10
475020	M 50/20	18	60	55	12	21.6	25
475032	M 50/32	18	60	55	12	20.0	25
475040	M 50/40	18	61	55	13	24.2	10
476340	M 63/40	18	75	68	12	39.0	25
476350	M 63/50	21	77	70	15	46.3	10

b) Pas PG / PG Thread (DIN40430)

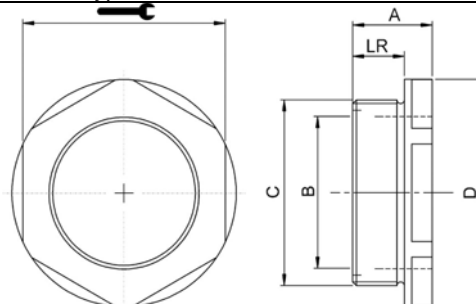
Reference / Reference	Pas / Thread C/B	A	D		LR	Poids / Weight g	Sachet / Packing u.
090770	Pg 9/7	20	21	19	8	2.7	100
110970	Pg 11/9	22.5	24	22	8	3.7	100
131170	Pg 13.5/11	24	26	24	9	4.2	100
160970	Pg 16/9	16	30	27	10	6.0	100
161170	Pg 16/11	16	30	27	10	5.5	100
161370	Pg 16/13.5	27	30	27	10	5.4	100
211670	Pg 21/16	16	35	32	11	8.1	100
292170	Pg 29/21	17	45	41	11	13.6	50
362970	Pg 36/29	24	60	50	18	25.3	50
423670	Pg 42/36	24	66	55	18	30.7	25
483679	Pg 48/36	20	71	60	14	38.7	25

Dimensions en mm / Dimensions in mm

AUTRES CARACTERISTIQUES / OTHER CHARACTERISTICS

Gamme de Temperatures *Temperature Range*: -30°C a / to +100°C

Resistante aux carburants, huiles et derives du petrole, et aux disolvants alyphatiques. /

Resistant to fuels, oils and oil products and to alyphatic solvents

The information provided in this Technical Data Sheet is considered to be true and correct at the time of publication. However, it may be changed without prior notice. It is the customer's obligation to determine the correct and safe selection, settings and conditions of use of the products. It is the customer's responsibility to check the delivered products and immediately notify INTERFLEX, S.L. of any detected fault. INTERFLEX, S.L. cannot be held responsible for any damage resulting from unprofessional installation, application or misuse of its products. If INTERFLEX, S.L. products are used in conjunction with non INTERFLEX, S.L. products, all product liability claims will be rejected. Visit our webpage www.interflex.es for an updated information.