



Guide cable refermable SWL

SWL support with lid

REVISION: 00

Fam.: SWL (G/N)

Page 1/1

DECRI SERIL ZI de la tuilliere 01700 MIRIBEL FRANCE · Tel: +33 (0)4 72 25 83 17·

DESCRIPTION

- guide gaine en polyamide haute qualité (PA6).
- sans halogene, phosphore et cadmium
- bonne resistance au choc et à la propagation de la flamme
- guide la gaine entre les elements de l'installation
- Couleur: gris foncé ou noir.

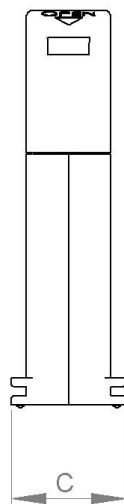
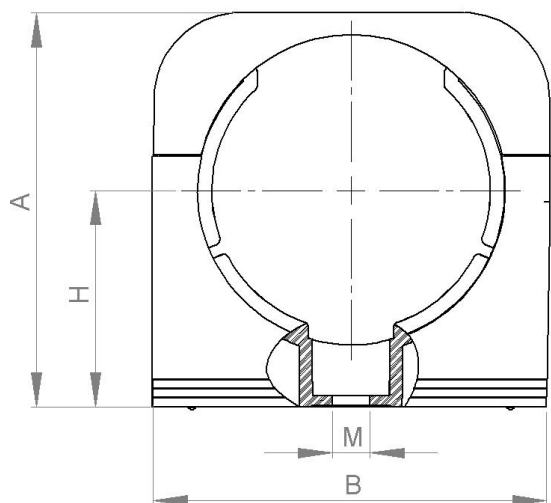
DESCRIPTION

- Supports manufactured from high-quality polyamide (PA6).
- Free of halogens, phosphorus and cadmium.
- Shock resistant and not flame propagator.
- For securing sections of corrugated conduits between the various parts of the electrical installation on machines.
- With conduit entry guide.
- With base for the fixation to RWL support guide.
- Colours: dark grey and black

CARACTERISTIQUE DIMENSION / DIMENSIONAL CHARACTERISTICS

Reference / Reference		DN (*)	A	B	C	H	Perçage / Bolt M	Poids / Weight g	Sachet / Packing u.
GRIS / GREY	NOIR / BLACK								
SWL-07G	SWL-07N	7	22	17	20	13	M4	3.0	100
SWL-10G	SWL-10N	10	25	22	20	13	M5	4.0	100
SWL-12G	SWL-12N	12	27	25	20	15	M5	5.0	100
SWL-17G	SWL-17N	17	33	31	20	19	M5	6.8	100
SWL-23G	SWL-23N	23	42	40	20	23	M6	9.0	50
SWL-29G	SWL-29N	29	47	46	20	26	M6	10.2	30
SWL-36G	SWL-36N	36	56	56	20	31	M6	13.8	20
SWL-48G	SWL-48N	48	70	70	20	39	M6	21.8	10

(*) DN = Diametre Nominale de la gaine / Nominal Diameter of the conduit to secure
Dimension en mm / Dimensions in mm



Information provided in this technical data sheet is considered to be true and correct at the time of publication. However, it may be changed without notice. It is the customer's obligation to determine the correct and safe selection, settings and conditions of use of the products. It is the customer's responsibility to check the delivered products and immediately notify INTERFLEX, S.A. of any detected fault. INTERFLEX, S.A. cannot be held responsible for any damage resulting from unprofessional installation, application or misuse of its products. If INTERFLEX, S.A. products are used in conjunction with non INTERFLEX, S.A. products, all product liability claims will be rejected. Visit our webpage www.interflex.es for an updated information.